



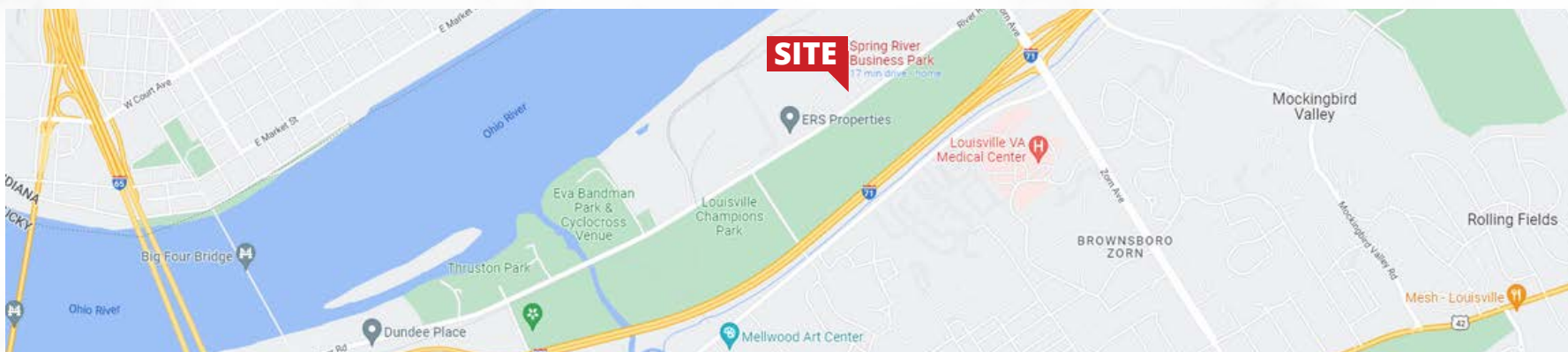
**FOR LEASE**  
3 FLOORS | HIGH VISIBILITY  
**2305 RIVER ROAD**  
LOUISVILLE, KY  
SPRING RIVER BUSINESS PARK

# SCENIC AERIAL



River Road

# SITE LOCATION



# BUILDING DETAILS



**TOTAL SQUARE FOOTAGE**

**32,586**

**NUMBER OF STORIES**

**3**

**BUILDING SIGNAGE**

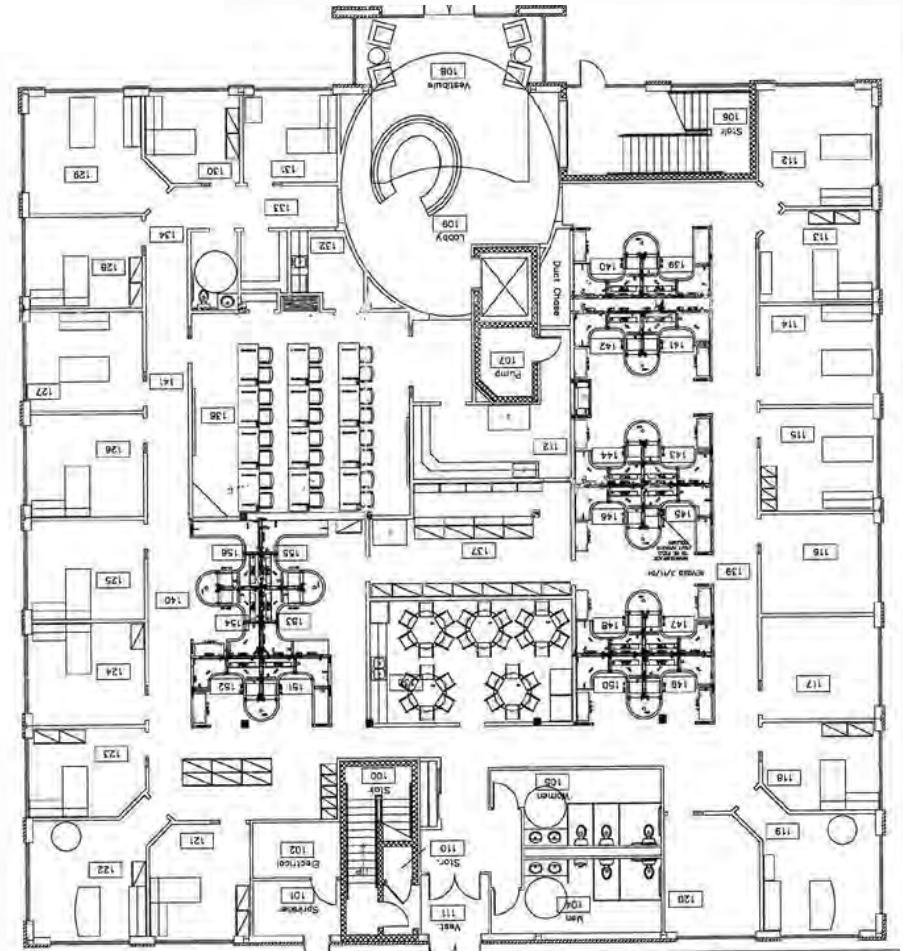
**AVAILABLE**

**PARKING RATIO**

**4 : 1,000**

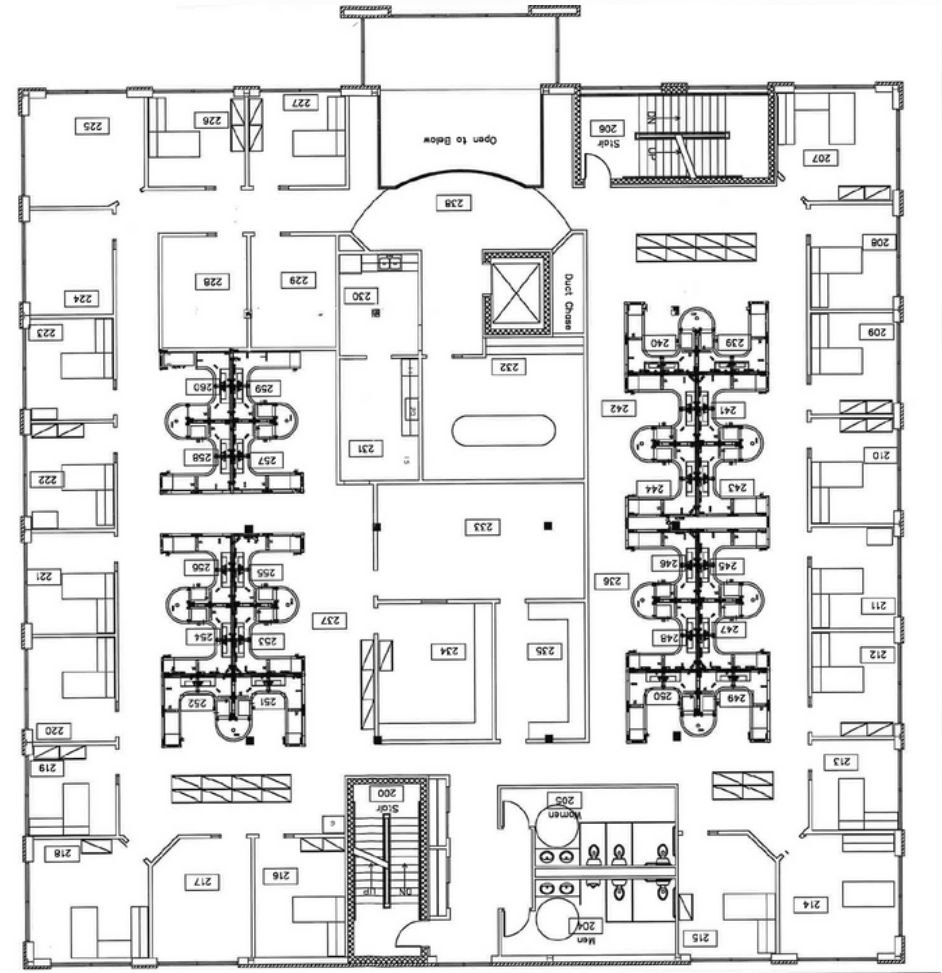
# FLOOR PLAN

# 1ST FLOOR



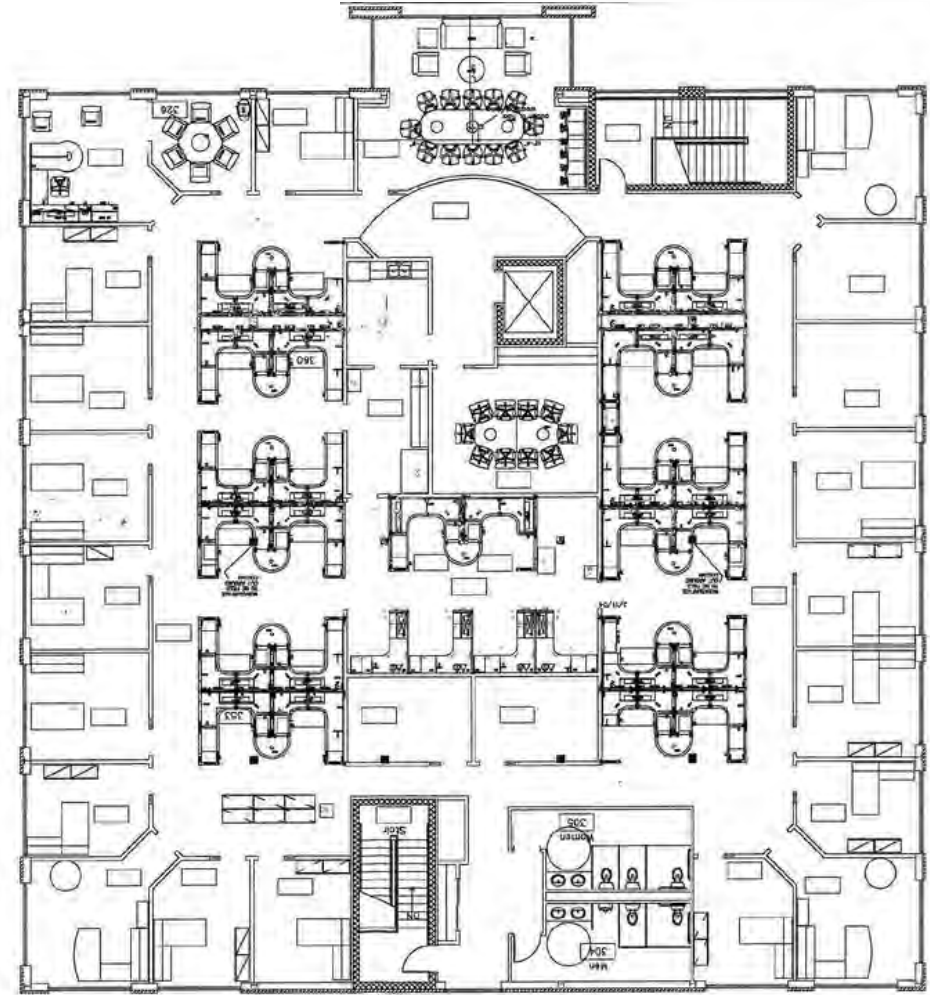
# FLOOR PLAN

# 2ND FLOOR



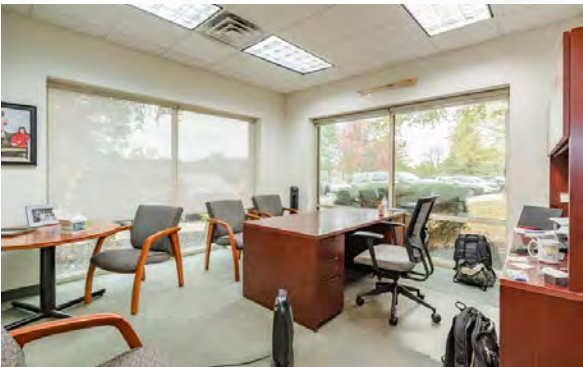
# FLOOR PLAN

# 3RD FLOOR



# IMAGES

# INTERIOR

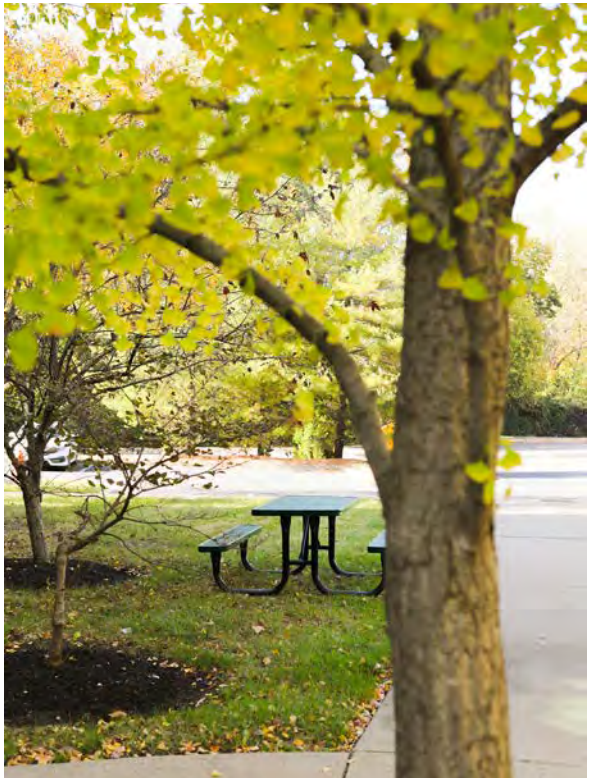
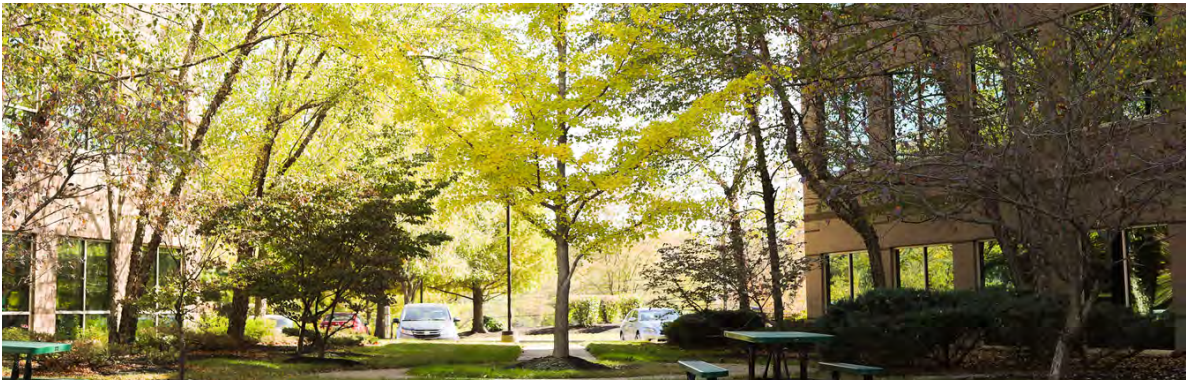




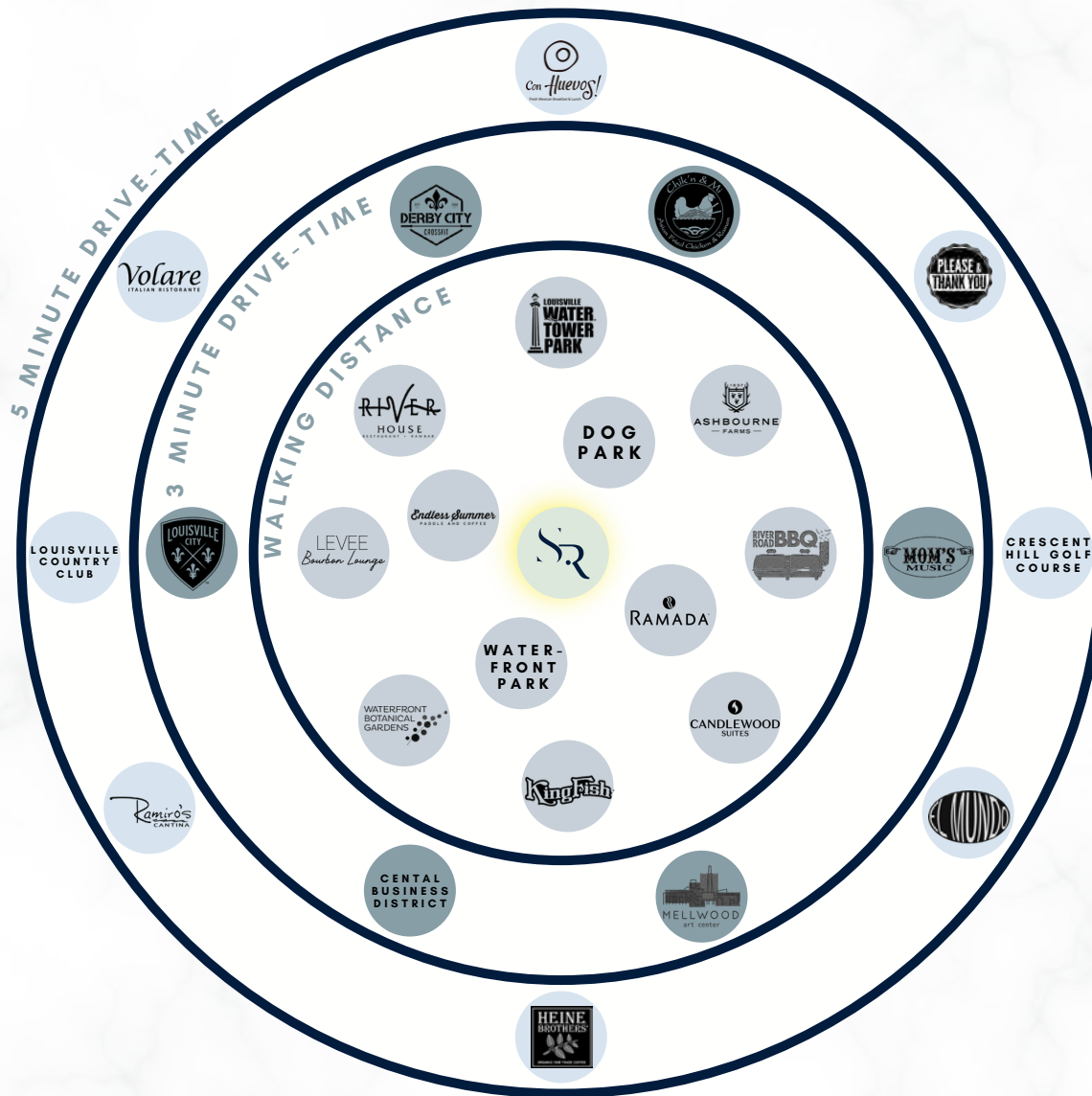
# IMAGES

---

# EXTERIOR



# NEARBY AMENITIES



# CONTACT INFORMATION



*The information contained herein was obtained from sources we believe to be reliable. However, Horizon Commercial Realty nor the property owner has verified the information and make no representation, warranty or guarantee of its accuracy or completeness. The information provided is for informational purposes only and is provided subject to the possibility of errors, omissions, change in offering terms, withdrawal of offering without notice and to any other special listing conditions. You and your tax, legal and financial advisors agree to conduct an independent investigation.*

**John Hollenbach Jr.**

[jhollenbachjr@hcrky.com](mailto:jhollenbachjr@hcrky.com) | 502.821.4080

**Clayton Pitcock**

[cpitcock@hcrky.com](mailto:cpitcock@hcrky.com) | 502.417.8960

